



Paolo Cavallone

Polimorfie

per flauto discendente al Si

Edizioni Musicali Rai Com
FOR PERUSAL ONLY

Edizioni Musicali RAI TRADE

Avverenze generali:

per nessuna ragione i pezzi possono essere eseguiti separatamente. Le pause fra una variazione ed un'altra devono essere significative.

Durata: 6' ca.

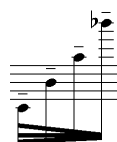
Legenda:



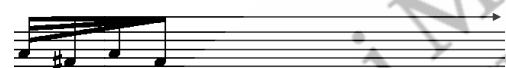
nota con valore indeterminato



note da eseguire in accelerando



note da eseguire in decelerando



ripetere la figurazione decelerando (legato e senza accenti) fino al punto indicato dalla freccia



soffio (sull'altezza indicata)



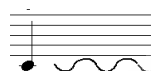
tremolo di armonici sulle fondamentali indicate



soffio/suono, suoni d'aria



tongue ram



oscillazione di altezza



armonico sulla fondamentale indicata



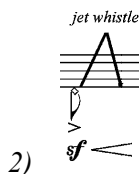
Armonico ottenuto coprendo l'imboccatura sulla fondamentale indicata



Tremolo di gola

Jet whistle

È indicato in due modi in partitura, a seconda che vengano utilizzate una o più note:



"...come un Valse di
Chopin
ricordo di pratiche
proibite..."

(P. Cavallone, da "Spirali")

a Roberto

Polimorfie

per flauto discendente al Si

Paolo Cavallone

I

Preludiando $\text{♩} = 72$

pp cresc. *sf* decresc. *p*

fp acc. *fp* acc. *fp* acc. *fp* acc.

sf p cresc. *fp* decresc. *<fp*

acc. *<fp* cresc. *fp* decresc. *<fp* decresc. *<fp*

mf cresc. *mf* decresc. *p* cresc. decresc. cresc. *fp* decresc. *nf*

jet whistle

II

Lo stesso tempo o poco meno, ma rubato

First musical staff in treble clef, 4/4 time. It features a sequence of five eighth notes with a '5' below them, grouped by a bracket. The dynamics are marked as *p*, *mp*, *p*, and *mp*. Dashed lines above the staff indicate phrasing. The first two notes are connected by a dashed line, and the last two notes are also connected by a dashed line.

Second musical staff in treble clef, 4/4 time. It features a sequence of five eighth notes with a '5' below them, grouped by a bracket. The dynamics are marked as *p* and *pp*. Dashed lines above the staff indicate phrasing. The first two notes are connected by a dashed line, and the last two notes are also connected by a dashed line.

Third musical staff in treble clef, 4/4 time. It features a sequence of five eighth notes with a '5' below them, grouped by a bracket. The dynamics are marked as *p*, *mp*, *p*, and *pp*. A section of the staff is marked 'suoni d'aria' and contains a fermata. The dynamics are marked as *mp* and *pp*. Dashed lines above the staff indicate phrasing. The first two notes are connected by a dashed line, and the last two notes are also connected by a dashed line.

Fourth musical staff in treble clef, 4/4 time. It features a sequence of five eighth notes with a '5' below them, grouped by a bracket. The dynamics are marked as *p*, *mp*, and *pp*. Dashed lines above the staff indicate phrasing. The first two notes are connected by a dashed line, and the last two notes are also connected by a dashed line.

Fifth musical staff in treble clef, 4/4 time. It features a sequence of five eighth notes with a '5' below them, grouped by a bracket. The dynamics are marked as *mf*, *pp*, and *mf*. Dashed lines above the staff indicate phrasing. The first two notes are connected by a dashed line, and the last two notes are also connected by a dashed line.

16

pp *mp*

17

f *mp* *p*

sempre legato

mf *mp*

rit.

5

p *ppp*

III

Meditativo, più lento e con rigore ritmico ♩ = 60

tongue ram soffio soffio/suono

mf p n pp p n

n mp mp p mf mp p pp

n p f

n mp p n mf p mp mf

n p mf mp f

tremolo di gola

flatt.

jet whistle